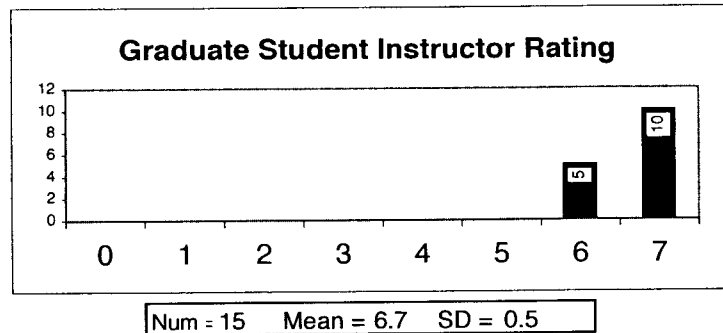
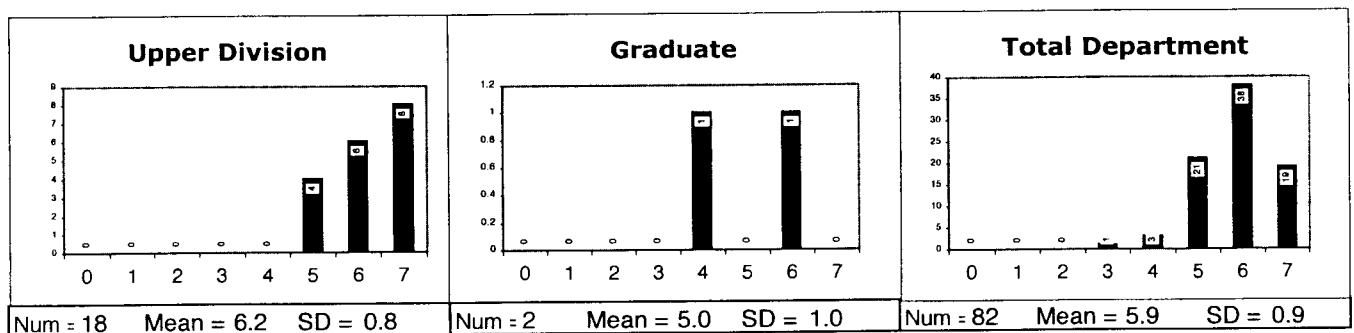
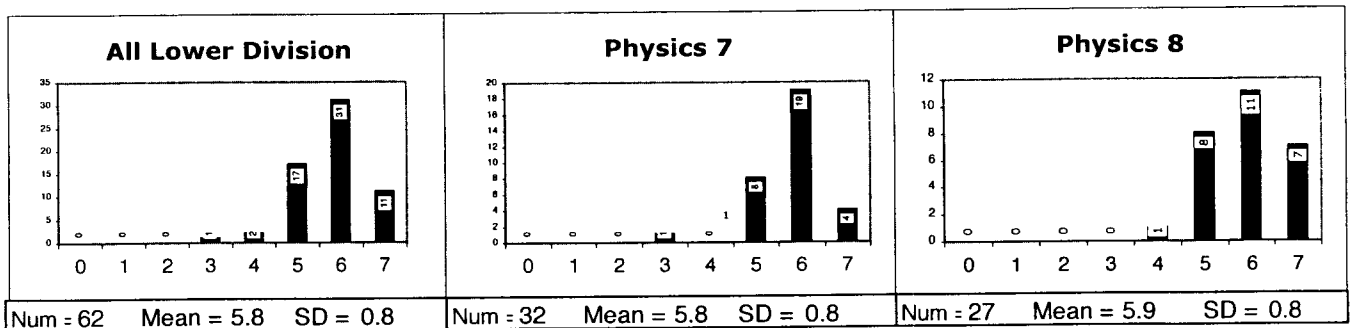


University of California, Berkeley
Department of Physics GSI Evaluation
Fall 2005

Instructor: Hal Haggard
Physics 105 Section



Department Graduate Student Instructor Ratings for This Semester (Excluding Seminars and Research)



GRADUATE STUDENT INSTRUCTOR (GSI) EVALUATION

GSI Name: Haggard, Hal Discussion/Lab Section: _____
Last name, First (Please circle one)

Course: Phys 105 Instructor: Stuart Bale Semester: Fall 05

The Committee on Courses of the Department of Physics requests your assistance in evaluating your Discussion or Laboratory GSI. This information will be used to improve teaching, and it will be made available to your GSI only after course grades have been recorded. The Department also uses this information in determining future GSI assignments and identifying unusually effective teaching. Thank you.

1) Rate your Discussion or Lab Section Graduate Student Instructor on overall performance in the course:

1 (poor) 2 3 4 (typical) 5 6 7 (excellent)

2) What are your GSI's strengths? For example, you might comment on your Discussion GSI's preparation and organization, effort to present material at the class' level of knowledge, clarity of presentation, responsiveness and accessibility, and attitude toward students. For Laboratory GSIs, comments might include preparation and organization, familiarity with theory, laboratory equipment and potential problems, responsiveness and accessibility, and attitude toward students.

Availability for questions, preparation for discussion, clarity of explanation, all around great instructor

3) What are your GSI's weaknesses? How could your GSI's teaching be improved?

?

4) If you like, please make additional remarks on your GSI's performance:

- a) How did your GSI do in Discussion Section?
 I rarely go to discussion in other classes but I hardly missed a single Hal discussion.
- b) How did your GSI do in Lab Section?
 N/A
- c) Was your GSI's office hours productive?
 yes!

If more space is needed for any of the above questions, please use the reverse.

GRADUATE STUDENT INSTRUCTOR (GSI) EVALUATION

GSI Name: Haggard, Hal Discussion/Lab Section: _____
Last name, First
 Course: Physics 105 Instructor: Bale Semester: Fall '05
(Please circle one)

The Committee on Courses of the Department of Physics requests your assistance in evaluating your Discussion or Laboratory GSI. This information will be used to improve teaching, and it will be made available to your GSI only after course grades have been recorded. The Department also uses this information in determining future GSI assignments and identifying unusually effective teaching. Thank you.

1) Rate your Discussion or Lab Section Graduate Student Instructor on overall performance in the course:

1 (poor) 2 3 4 (typical) 5 6 ⑦ (excellent)

2) What are your GSI's strengths? For example, you might comment on your Discussion GSI's preparation and organization, effort to present material at the class' level of knowledge, clarity of presentation, responsiveness and accessibility, and attitude toward students. For Laboratory GSIs, comments might include preparation and organization, familiarity with theory, laboratory equipment and potential problems, responsiveness and accessibility, and attitude toward students.

The pace is just enough
 Everything is clear, and I love the boardwork
 and how he ~~shows~~ gives us insights ~~and~~
 on the material. He's also willing to help.

3) What are your GSI's weaknesses? How could your GSI's teaching be improved?

None

4) If you like, please make additional remarks on your GSI's performance:

a) How did your GSI do in Discussion Section?

Excellent

b) How did your GSI do in Lab Section?

N.A

c) Was your GSI's office hours productive?

N.A

If more space is needed for any of the above questions, please use the reverse.

GRADUATE STUDENT INSTRUCTOR (GSI) EVALUATION

GSI Name: Hagard, Hal Discussion / Lab Section: _____
Last name, First (Please circle one)

Course: physics 105 Instructor: Stewart Bale Semester: Fall 2005

The Committee on Courses of the Department of Physics requests your assistance in evaluating your Discussion or Laboratory GSI. This information will be used to improve teaching, and it will be made available to your GSI only after course grades have been recorded. The Department also uses this information in determining future GSI assignments and identifying unusually effective teaching. Thank you.

1) Rate your Discussion or Lab Section Graduate Student Instructor on overall performance in the course:

1 (poor) 2 3 4 (typical) 5 6 7 (excellent)

2) What are your GSI's strengths? For example, you might comment on your Discussion GSI's preparation and organization, effort to present material at the class' level of knowledge, clarity of presentation, responsiveness and accessibility, and attitude toward students. For Laboratory GSIs, comments might include preparation and organization, familiarity with theory, laboratory equipment and potential problems, responsiveness and accessibility, and attitude toward students.

Always had discussion material prepared, was able to answer all student questions, and was always helpful in office hours. Would even answer questions during no class/office hour time. Also had ~~kick~~ ass review sessions.

3) What are your GSI's weaknesses? How could your GSI's teaching be improved?

None

4) If you like, please make additional remarks on your GSI's performance:

a) How did your GSI do in Discussion Section?

Very well, always answered hw questions and general concept questions

b) How did your GSI do in Lab Section?

N/A

c) Was your GSI's office hours productive?

Very productive and helpful.

If more space is needed for any of the above questions, please use the reverse.

GRADUATE STUDENT INSTRUCTOR (GSI) EVALUATION

GSI Name: Haggard, Hal Discussion / Lab Section: _____
Last name, First (Please circle one)

Course: 105 Instructor: Prof. Bale Semester: Fall '05

The Committee on Courses of the Department of Physics requests your assistance in evaluating your Discussion or Laboratory GSI. This information will be used to improve teaching, and it will be made available to your GSI only after course grades have been recorded. The Department also uses this information in determining future GSI assignments and identifying unusually effective teaching. Thank you.

1) Rate your Discussion or Lab Section Graduate Student Instructor on overall performance in the course:

1 (poor) 2 3 4 (typical) 5 6 (circled) 7 (excellent)

2) What are your GSI's strengths? For example, you might comment on your Discussion GSI's preparation and organization, effort to present material at the class' level of knowledge, clarity of presentation, responsiveness and accessibility, and attitude toward students. For Laboratory GSIs, comments might include preparation and organization, familiarity with theory, laboratory equipment and potential problems, responsiveness and accessibility, and attitude toward students.

- o Very Friendly
- o Enthusiastic
- o Lots of demos, Good Exercises
- o Good E-mail communication.

3) What are your GSI's weaknesses? How could your GSI's teaching be improved?

- o Needs stable office hours.

4) If you like, please make additional remarks on your GSI's performance:

a) How did your GSI do in Discussion Section?

Saved me!

b) How did your GSI do in Lab Section?

—

c) Was your GSI's office hours productive?

Yes

If more space is needed for any of the above questions, please use the reverse.

GRADUATE STUDENT INSTRUCTOR (GSI) EVALUATION

GSI Name: Haggard, Hal Discussion/Lab Section: Tu 2-3
Last name, First (Please circle one)
 Course: 105 Instructor: Bule Semester: Fall 05

The Committee on Courses of the Department of Physics requests your assistance in evaluating your Discussion or Laboratory GSI. This information will be used to improve teaching, and it will be made available to your GSI only after course grades have been recorded. The Department also uses this information in determining future GSI assignments and identifying unusually effective teaching. Thank you.

1) Rate your Discussion or Lab Section Graduate Student Instructor on overall performance in the course:

1 (poor) 2 3 4 (typical) 5 **6** 7 (excellent)

2) What are your GSI's strengths? For example, you might comment on your Discussion GSI's preparation and organization, effort to present material at the class' level of knowledge, clarity of presentation, responsiveness and accessibility, and attitude toward students. For Laboratory GSIs, comments might include preparation and organization, familiarity with theory, laboratory equipment and potential problems, responsiveness and accessibility, and attitude toward students.

Clear Presentations, Friendly and knowledgable

3) What are your GSI's weaknesses? How could your GSI's teaching be improved?

Rather than focusing on examples, a brief summary of main concepts behind the math would be nice, as the book does a horrible job of this

4) If you like, please make additional remarks on your GSI's performance:

a) How did your GSI do in Discussion Section?

good

b) How did your GSI do in Lab Section?

NA

c) Was your GSI's office hours productive?

If more space is needed for any of the above questions, please use the reverse.

GRADUATE STUDENT INSTRUCTOR (GSI) EVALUATION

GSI Name: Haggard Hal Discussion/Lab Section: _____
Last name, First (Please circle one)
 Course: 105 Instructor: BALE Semester: FALL 05

The Committee on Courses of the Department of Physics requests your assistance in evaluating your Discussion or Laboratory GSI. This information will be used to improve teaching, and it will be made available to your GSI only after course grades have been recorded. The Department also uses this information in determining future GSI assignments and identifying unusually effective teaching. Thank you.

1) Rate your Discussion or Lab Section Graduate Student Instructor on overall performance in the course:

1 2 3 4 5 6 7
 (poor) (typical) (excellent)

2) What are your GSI's strengths? For example, you might comment on your Discussion GSI's preparation and organization, effort to present material at the class' level of knowledge, clarity of presentation, responsiveness and accessibility, and attitude toward students. For Laboratory GSIs, comments might include preparation and organization, familiarity with theory, laboratory equipment and potential problems, responsiveness and accessibility, and attitude toward students.

Hal is great. He come prepared with problem, interesting discussion and he
 even show in some fun experiments every now and there.
 He listen to questions and tries to answer. Great pedagogy.

3) What are your GSI's weaknesses? How could your GSI's teaching be improved?

4) If you like, please make additional remarks on your GSI's performance:

- How did your GSI do in Discussion Section?
- How did your GSI do in Lab Section?
- Was your GSI's office hours productive?

If more space is needed for any of the above questions, please use the reverse.

GRADUATE STUDENT INSTRUCTOR (GSI) EVALUATION

GSI Name: Haggard, Hal Discussion/Lab Section: 101
Last name, First
 Course: Ph105 Instructor: Stuart D. Eile Semester: Fall 2005
(Please circle one)

The Committee on Courses of the Department of Physics requests your assistance in evaluating your Discussion or Laboratory GSI. This information will be used to improve teaching, and it will be made available to your GSI only after course grades have been recorded. The Department also uses this information in determining future GSI assignments and identifying unusually effective teaching. Thank you.

1) Rate your Discussion or Lab Section Graduate Student Instructor on overall performance in the course:

1 (poor) 2 3 4 (typical) 5 6 7 (excellent)

2) What are your GSI's strengths? For example, you might comment on your Discussion GSI's preparation and organization, effort to present material at the class' level of knowledge, clarity of presentation, responsiveness and accessibility, and attitude toward students. For Laboratory GSIs, comments might include preparation and organization, familiarity with theory, laboratory equipment and potential problems, responsiveness and accessibility, and attitude toward students.

He has a good understanding of course material, and usually gives a clear presentation

And he spends some time to prepare demos during discussion section

3) What are your GSI's weaknesses? How could your GSI's teaching be improved?

4) If you like, please make additional remarks on your GSI's performance:

- How did your GSI do in Discussion Section?
- How did your GSI do in Lab Section?
- Was your GSI's office hours productive?

If more space is needed for any of the above questions, please use the reverse.

GRADUATE STUDENT INSTRUCTOR (GSI) EVALUATION

GSI Name: Haggard, Hal Discussion / Lab Section: _____
Last name, First (Please circle one)

Course: 105 Instructor: Bale Semester: F '05

The Committee on Courses of the Department of Physics requests your assistance in evaluating your Discussion or Laboratory GSI. This information will be used to improve teaching, and it will be made available to your GSI only after course grades have been recorded. The Department also uses this information in determining future GSI assignments and identifying unusually effective teaching. Thank you.

1) Rate your Discussion or Lab Section Graduate Student Instructor on overall performance in the course:

1 (poor) 2 3 4 (typical) 5 6 ⑦ (excellent)

2) What are your GSI's strengths? For example, you might comment on your Discussion GSI's preparation and organization, effort to present material at the class' level of knowledge, clarity of presentation, responsiveness and accessibility, and attitude toward students. For Laboratory GSIs, comments might include preparation and organization, familiarity with theory, laboratory equipment and potential problems, responsiveness and accessibility, and attitude toward students.

Well-prepared, knowledgeable, puts in lots of time for preparation,
 easily accessible, interesting presentations
 -never had demos in a discussion section before!
 liked the animations you created.

3) What are your GSI's weaknesses? How could your GSI's teaching be improved?

4) If you like, please make additional remarks on your GSI's performance:

a) How did your GSI do in Discussion Section?
 Great.

b) How did your GSI do in Lab Section?

c) Was your GSI's office hours productive?
 Very helpful

If more space is needed for any of the above questions, please use the reverse.

GRADUATE STUDENT INSTRUCTOR (GSI) EVALUATION

GSI Name: Haggard, Hal Last name, First Discussion / Lab Section: _____
(Please circle one)
 Course: Physics 105 Instructor: Bale Semester: Fall 2005

The Committee on Courses of the Department of Physics requests your assistance in evaluating your Discussion or Laboratory GSI. This information will be used to improve teaching, and it will be made available to your GSI only after course grades have been recorded. The Department also uses this information in determining future GSI assignments and identifying unusually effective teaching. Thank you.

1) Rate your Discussion or Lab Section Graduate Student Instructor on overall performance in the course:

1 (poor) 2 3 4 (typical) 5 6 7 (excellent)

2) What are your GSI's strengths? For example, you might comment on your Discussion GSI's preparation and organization, effort to present material at the class' level of knowledge, clarity of presentation, responsiveness and accessibility, and attitude toward students. For Laboratory GSIs, comments might include preparation and organization, familiarity with theory, laboratory equipment and potential problems, responsiveness and accessibility, and attitude toward students.

Extremely well prepared for section, always tried to present material at an appropriate level. Very clear explanations in office hours. Always available even outside of office hours and willing to reschedule as necessary. Genuinely excited about the material, which makes it easier for student to learn. In addition, he's a really nice guy. Best GSI I've had.

3) What are your GSI's weaknesses? How could your GSI's teaching be improved?

Sorry... can't think of any...

4) If you like, please make additional remarks on your GSI's performance:

a) How did your GSI do in Discussion Section?

Very well prepared. Discussions were germane to lecture.

b) How did your GSI do in Lab Section?

c) Was your GSI's office hours productive?

Extremely.

If more space is needed for any of the above questions, please use the reverse.

GRADUATE STUDENT INSTRUCTOR (GSI) EVALUATION

GSI Name: Haagard, Hal Discussion/Lab Section: Tu 12/6
Last name, First (Please circle one)
 Course: PI05 Instructor: Bole Semester: 2005 Fall

The Committee on Courses of the Department of Physics requests your assistance in evaluating your Discussion or Laboratory GSI. This information will be used to improve teaching, and it will be made available to your GSI only after course grades have been recorded. The Department also uses this information in determining future GSI assignments and identifying unusually effective teaching. Thank you.

1) Rate your Discussion or Lab Section Graduate Student Instructor on overall performance in the course:

1 (poor) 2 3 4 (typical) 5 6 7 (excellent)

2) What are your GSI's strengths? For example, you might comment on your Discussion GSI's preparation and organization, effort to present material at the class' level of knowledge, clarity of presentation, responsiveness and accessibility, and attitude toward students. For Laboratory GSIs, comments might include preparation and organization, familiarity with theory, laboratory equipment and potential problems, responsiveness and accessibility, and attitude toward students.

Clear explanations, enthusiastic, approachable, covers a lot of ground

3) What are your GSI's weaknesses? How could your GSI's teaching be improved?

4) If you like, please make additional remarks on your GSI's performance:

- a) How did your GSI do in Discussion Section? Very helpful, actually does the don't-erase-what-you-just-wrote thing correctly
- b) How did your GSI do in Lab Section? /
- c) Was your GSI's office hours productive? Yes — more than makes up for the hideous mess that is Hand and Finch

If more space is needed for any of the above questions, please use the reverse.

GRADUATE STUDENT INSTRUCTOR (GSI) EVALUATION

GSI Name: Haggard, Hal Discussion/Lab Section: _____
Last name, First (Please circle one)
 Course: Physics 105 Instructor: Bale Semester: Fall '05

The Committee on Courses of the Department of Physics requests your assistance in evaluating your Discussion or Laboratory GSI. This information will be used to improve teaching, and it will be made available to your GSI only after course grades have been recorded. The Department also uses this information in determining future GSI assignments and identifying unusually effective teaching. Thank you.

1) Rate your Discussion or Lab Section Graduate Student Instructor on overall performance in the course:

1 (poor) 2 3 4 (typical) 5 6 7 (excellent)

2) What are your GSI's strengths? For example, you might comment on your Discussion GSI's preparation and organization, effort to present material at the class' level of knowledge, clarity of presentation, responsiveness and accessibility, and attitude toward students. For Laboratory GSIs, comments might include preparation and organization, familiarity with theory, laboratory equipment and potential problems, responsiveness and accessibility, and attitude toward students.

Always prepared, gives great supplements and clarifications on lecture & book material. Is always accessible, responds to concerns, questions, etc with great enthusiasm. Is very approachable. Explains things in very clear & coherent manner. Brings in great demonstrations!
 I actually really enjoy going to discussions,

3) What are your GSI's weaknesses? How could your GSI's teaching be improved?

Hal, you've been my absolute favorite GSI at Berkeley!

4) If you like, please make additional remarks on your GSI's performance:

- How did your GSI do in Discussion Section?
- How did your GSI do in Lab Section?
- Was your GSI's office hours productive?

If more space is needed for any of the above questions, please use the reverse.

GRADUATE STUDENT INSTRUCTOR (GSI) EVALUATION

GSI Name: Haggard, Hal Last name, First Discussion Lab Section: _____
(Please circle one)
 Course: 105 Instructor: Bale Semester: Fa 05

The Committee on Courses of the Department of Physics requests your assistance in evaluating your Discussion or Laboratory GSI. This information will be used to improve teaching, and it will be made available to your GSI only after course grades have been recorded. The Department also uses this information in determining future GSI assignments and identifying unusually effective teaching. Thank you.

1) Rate your Discussion or Lab Section Graduate Student Instructor on overall performance in the course:

1 (poor) 2 3 4 (typical) 5 6 7 (excellent)

2) What are your GSI's strengths? For example, you might comment on your Discussion GSI's preparation and organization, effort to present material at the class' level of knowledge, clarity of presentation, responsiveness and accessibility, and attitude toward students. For Laboratory GSIs, comments might include preparation and organization, familiarity with theory, laboratory equipment and potential problems, responsiveness and accessibility, and attitude toward students.

Always gives extremely good explanations. Discussions were always organized, well thought out and in sync with the lectures.
~~Did a good job of answering answering~~

3) What are your GSI's weaknesses? How could your GSI's teaching be improved?

4) If you like, please make additional remarks on your GSI's performance:

a) How did your GSI do in Discussion Section?

b) How did your GSI do in Lab Section?

c) Was your GSI's office hours productive?

Very much so, and office hours were always flexible. Extra time was given if we needed it.

If more space is needed for any of the above questions, please use the reverse.

GRADUATE STUDENT INSTRUCTOR (GSI) EVALUATION

GSI Name: Haggard Hal
Last Name, First
 Course: P 105 Instructor: Prof. Stuart Bale Semester: Fall 05
 Discussion/Lab Section: _____
(Please circle one)

The Committee on Courses of the Department of Physics requests your assistance in evaluating your Discussion or Laboratory GSI. This information will be used to improve teaching, and it will be made available to your GSI only after course grades have been recorded. The Department also uses this information in determining future GSI assignments and identifying unusually effective teaching. Thank you.

1) Rate your Discussion or Lab Section Graduate Student Instructor on overall performance in the course:

1 (poor) 2 3 4 (typical) 5 6 7 (excellent)

2) What are your GSI's strengths? For example, you might comment on your Discussion GSI's preparation and organization, effort to present material at the class' level of knowledge, clarity of presentation, responsiveness and accessibility, and attitude toward students. For Laboratory GSIs, comments might include preparation and organization, familiarity with theory, laboratory equipment and potential problems, responsiveness and accessibility, and attitude toward students.

- very helpful
- always prepared and knows what is going on
- very accessible as he responded to emails, and stayed longer at OMI and discussion almost always if needed
- very good attitude towards students

3) What are your GSI's weaknesses? How could your GSI's teaching be improved?

-none

4) If you like, please make additional remarks on your GSI's performance:

a) How did your GSI do in Discussion Section?

excellent

b) How did your GSI do in Lab Section?

—

c) Was your GSI's office hours productive?

very

If more space is needed for any of the above questions, please use the reverse.

GRADUATE STUDENT INSTRUCTOR (GSI) EVALUATION

GSI Name: Maggard, Hal Discussion/Lab Section: 04
Last name, First (Please circle one)
 Course: 105 Instructor: PROF GALE Semester: Fall 2005

The Committee on Courses of the Department of Physics requests your assistance in evaluating your Discussion or Laboratory GSI. This information will be used to improve teaching, and it will be made available to your GSI only after course grades have been recorded. The Department also uses this information in determining future GSI assignments and identifying unusually effective teaching. Thank you.

1) Rate your Discussion or Lab Section Graduate Student Instructor on overall performance in the course:

1 (poor) 2 3 4 (typical) 5 6 7 (excellent)

2) What are your GSI's strengths? For example, you might comment on your Discussion GSI's preparation and organization, effort to present material at the class' level of knowledge, clarity of presentation, responsiveness and accessibility, and attitude toward students. For Laboratory GSIs, comments might include preparation and organization, familiarity with theory, laboratory equipment and potential problems, responsiveness and accessibility, and attitude toward students.

well prepared, very knowledgeable and VERY ENTHUSIASTIC
 VERY ACCESSIBLE + VERY +ve attitude

I REALLY LIKED THE INTERACTION & learnt a lot
Thanks

3) What are your GSI's weaknesses? How could your GSI's teaching be improved?

4) If you like, please make additional remarks on your GSI's performance:

a) How did your GSI do in Discussion Section?

b) How did your GSI do in Lab Section?

c) Was your GSI's office hours productive? VERY VERY

If more space is needed for any of the above questions, please use the reverse.

GRADUATE STUDENT INSTRUCTOR (GSI) EVALUATION

GSI Name: Haggard, HAC Discussion/Lab Section: TU 1-2
Last name, First (Please circle one)
 Course: 105 Instructor: Bale Semester: F05

The Committee on Courses of the Department of Physics requests your assistance in evaluating your Discussion or Laboratory GSI. This information will be used to improve teaching, and it will be made available to your GSI only after course grades have been recorded. The Department also uses this information in determining future GSI assignments and identifying unusually effective teaching. Thank you.

1) Rate your Discussion or Lab Section Graduate Student Instructor on overall performance in the course:

1 (poor) 2 3 4 (typical) 5 6 7 (excellent)

2) What are your GSI's strengths? For example, you might comment on your Discussion GSI's preparation and organization, effort to present material at the class level of knowledge, clarity of presentation, responsiveness and accessibility, and attitude toward students. For Laboratory GSIs, comments might include preparation and organization, familiarity with theory, laboratory equipment and potential problems, responsiveness and accessibility, and attitude toward students.

He is easy to talk to, great understanding of material
 Helps students learn instead of giving away answers
 Best GSI I've had after 3 1/2 years here

3) What are your GSI's weaknesses? How could your GSI's teaching be improved?

4) If you like, please make additional remarks on your GSI's performance:

- a) How did your GSI do in Discussion Section?
- b) How did your GSI do in Lab Section?
- c) Was your GSI's office hours productive?

If more space is needed for any of the above questions, please use the reverse.